



The flagship hotel of the Keihan Group
【 THE THOUSAND KYOTO 】

Open from Tuesday January 29, 2019 in front of Kyoto

Leveraging the abundant wisdom of Kyoto: A Personal Comfort Hotel has emerged

Keihan Hotels & Resorts Co., Ltd. (Head Office: Shimogyo Ward, Kyoto City, President: Toshihiko Inachi) has addressed the global market in and around the Kyoto Station area **in opening the new Keihan Group flagship hotel: 'THE THOUSAND KYOTO'** as of Tuesday January 29, 2019.

'THE THOUSAND KYOTO' pioneers the concept - unique and unprecedented in Kyoto - of a "Personal Comfort Hotel"; tapping into the value of simple services and high quality and targeting those who value 'what is enriching and comforting' when selecting their go-to option. Treasuring the space and time each of us needs and ensuring unrivalled comfort for each staying guest, 'THE THOUSAND KYOTO' aims to deliver a new and unique Kyoto Experience.



◆ **Main Concept "Leveraging the abundant wisdom of Kyoto"**

~ Personal Comfort Hotel ~”

In today’s social era, where connecting with others has never been more important, the concept that saw this hotel come into being was the need in Kyoto for ‘A more personal and healing hotel’. Cafes and restaurants serving up food just the way you like it, rooms that reflect your own sense of self, facilities that heal mind and body and Kyoto’s legendary hospitality and care. We will do whatever it takes to ensure each guest is comfortable.

◆ Design Concept “Comfort·Minimalism”

With simple and sophisticated design, we created a space embodying the essence of Japanese comfort. Championing a minimalist concept, akin to a tea house or a traditional Kyoto-style townhouse, alongside the functional beauty of tools and harmony with nature. Leveraging abundant wisdom, nurtured and permeating throughout the City of Kyoto, we will ensure each and every guest enjoys the stay.

◆ Explaining our name and corporate logo

Reflecting how we provide the essence of wisdom and hospitality, synonymous with the ‘Millennial Capital of Kyoto’, to all our guests. This is how we decided on ‘THE THOUSAND KYOTO’ name.

Using a corporate logo incorporating one more circle than the symbol for infinity (∞) denotes ‘1000’ and at the same time, embodies our wish to strive for ‘millennial and infinity-inspired’ service that champions comfort. Moreover, it also signifies ‘mizuhiki’, a Japanese style of knot, representing our commitment and connection with guests, as exemplified in the symbolically glowing motif; prominently worn by each member of staff.



◆ Consideration and contribution toward the environment and area: a hotel existing in harmony with Kyoto

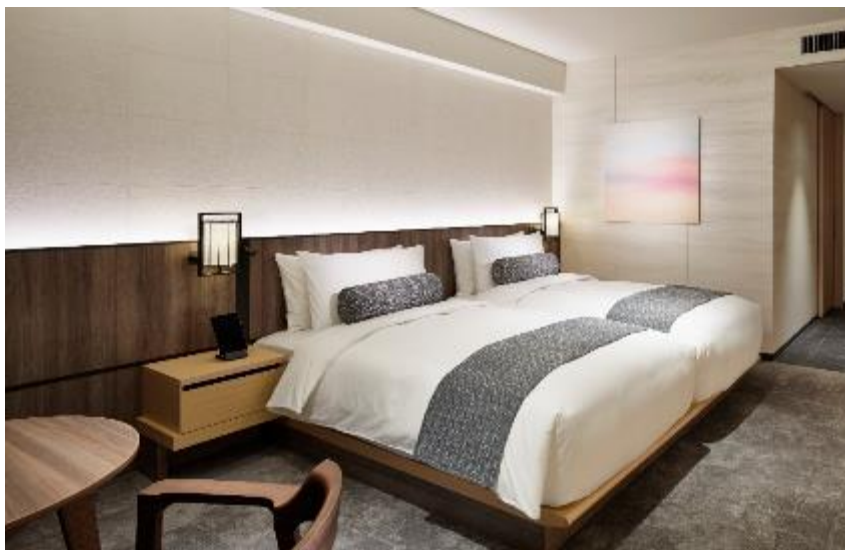
As well as our greening drive to encapsulate elements of the beautiful Kyoto mountain scenery into our premises, reflecting the need to both consider and contribute to the local environment and area, we not only promote the use of renewable solar energy, but have also introduced a system of using wells that optimally exploits Kyoto’s abundant groundwater artery. This helps reduce CO₂ consumption and promotes our role as a local disaster-prevention center. We will advance initiatives with value commensurate with and befitting a hotel constructed at the gateway to Kyoto.



◆ THE Symbolizing THE THOUSAND KYOTO: “Grand Stairs” and the lobby art “Wind Form” <Gues

In the best of Zen traditions; adopting a minimalistic design that eliminates anything superfluous with a uniquely

Japanese-style low configuration. Abundant greenery and light to behold and beautifully conceived guestroom art for a space full of peace and freshness. The specially selected amenities and other fittings typify the wisdom and healing that abound in Kyoto. Each room in our range, from 'Standard' onward, reflects the main concept of 'leveraging the abundant wisdom of Kyoto' to embody the Personal Comfort Hotel', with four types of suite room also on offer.



<Standard Room> The Thousand Twin 37 m²



Amenities

【Total guestrooms】 222 【Check-in】 3:00 pm 【Check-out】 12:00 noon
 【Breakfast】 Western/Japanese / Room Service

<Wedding Chapel>

A feeling of being enveloped in greenery, while gazing at leaves blowing in the wind and flowing water and within a garden that brings you at one with nature. A stand-alone chapel, 'KOMOREBIDO', set in the heart of verdant and ever-changing nature. As well as the longed-for chance to leave the urban hustle and bustle behind, we compose wedding options that satisfy each and every guest in full.



Restaurants Perspective picture: [KOMOREBIDO] Left / Appearance, Right / Interior view

But great taste isn't the only highlight! Bringing you joy, delight, surprise, new discoveries, the essence of Kyoto and its culture... through each and every dish, encapsulating excitement, its own story, experiences and feelings, we deliver the same to our valued customers. Our cuisine offers both exceptional quality and ingredients from all corners of the globe, as well as Kyoto, for your delectation.

·'KIZAHASHI'

<Enjoy Japanese cuisine in a calm setting with garden views>

For lunch, we cover the whole range, from affordable bento boxes to exquisite kaiseki food courses.

At dinnertime meanwhile, as well as seated course meal options, don't miss our exceptional dessert wagon; masterfully uniting stillness and motion. We have menus for overseas visitors available and will strive to meet any other requests you may have.

◆ **Recommended: Enjoy the best in modern culinary delights with our night-time counter seats**

From your night-time counter seats, a wealth of char-grilled a-la-carte favorites on offer. Our chef showcases the natural ingredients of the day for you, from traditional style to innovative creations, together with recommended recipes alongside. Diners can enjoy our original-style Japanese cuisine where customers select their own choice of food and cooking styles and discuss it directly with the chef!



Where exquisite taste and garden beauty combine:

·'SCALAE'

<Innovative Italian>

This may be a more casual and open-style restaurant, but dishes are every bit as excellent and tasty! Including a range of modern, fusion and innovative choices for an enjoyable and outside-the-box eating experience. Everything on offer embodies the chef's contemporary flair and is sure to captivate diners.

◆ **Recommended: An endlessly vibrant experience: dinner at the 'SCALAE PLUS' counter seats**

For those taking dinner at the counter, we offer a single special course, combining local Kyoto ingredients with the best of the rest from around the world. There's also the must-try special Scalae seat, where the chef conjures up a special combination, including fusion and molecular elements.



·'TEA & BAR'

Whether counter or table, fun across the board at 'SCALAE'

<A theme celebrating the iconic existence of the 'modern tea party'>

At your timing of choice and in your favored style, whether sipping a tea or enjoying a glass of sake, a cafe and bar that express and offer a contemporary interpretation of the Kyoto tea culture.

◆ **Recommended: The very best in high-quality Japanese tea from selected areas and farmers**

"Omotenashi Senchashi", a designated tea specialist, carefully selected the tea leaves from Wazuka-cho, one of the best Uji tea-producing areas in Kyoto, as well as various other places nationwide. Thoroughly enjoy our seasonal tea and "Japanese Black Tea" that is now in fashion.



'TEA & BAR': Themed around a modern tea party

<Spa & Fitness>

· THE THOUSAND SPA

Themed on meditation, our comfortable spa offers visitors treatments that cater to all five senses as well as hot spring bathing and stone spa facilities to enjoy.

◆ Treatment highlights ◆

- A spa treatment using the spa brand 'Temae'; made from tea leaves and natural water
- Original body massage using charcoal



· THE THOUSAND FITNESS

◆ Fitness highlights ◆

- Staying guests can use our gym facilities free of charge (24 hours)
- A fitness club members' scheme also allowing 'stone spa' access (open to a limited number of guests)
- Personal training by request

<'Experience Program' exclusively for staying guests "OKU TRIP KYOTO">



The staff at 'THE THOUSAND KYOTO' combed their own city and went one step deeper into the 'Kyoto Experience.' If you seek a travel program offering unforgettable and **exquisite** experiences, look no further than our 'OKUTRIP KYOTO', which brings home to you the experience of 'Deep Kyoto' in a package tailored to each guest's needs.

<'OKUTRIP KYOTO' Concept>

Now relish knowing, feeling and enjoying 'Deep Kyoto'. Welcome - step in and experience the 'real' Kyoto. Places no guidebook will show you, people you'll never otherwise meet and stories you'd never normally hear - welcome to 'Deep Kyoto' - an experience even most locals will never enjoy.

Check out the examples below:

<OKUTRIP ①>



◆ We are planning a special train package, featuring the Eizan tourist train, which made its debut on 21 March, 2018 for a 'Hiei' charter run. Also includes our enticing dining options.

<OKUTRIP ②>



◆ Enjoying 'The Kyoto Sky' with our incredible "Helicopter Cruising" option. We work with special helicopter operators to offer you the best cruising options.

<OKUTRIP ③>



◆ As well as an all-out 'Zen meditation' experience, offered to a limited number of guests in small groups at a private temple, another special plan we offer features free time in a private tatami room reserved for your use and exclusive garden access for your enjoyment.

* Other options currently in preparation. Please check back on our website

<Facility Configuration>

B1F: Parking lot, fitness area, meeting rooms, beauty salon

1F: Entrance (porch / entrance hall structure / grand stairs), reception, ballroom, medium banquet room, waiting room

2F: Wedding salon, costume room, restaurant, spa (treatment rooms)

3F: Chapel, garden, guestrooms, spa (reception, hot bath, stone spa, sauna)

4F~9F: Guestrooms

Notes: Floors B1 to 3 are connected to the Kyoto Century Hotel

THE THOUSAND KYOTO

Location: 570 Higashishiokoji-cho, Shimogyo Ward, Kyoto City

〒600-8216

Access: Around 2 minutes' walk from JR Kyoto Station

Opening date: January 29, 2019 (Tue.)

No. of floors: 10 (B1F~9F)

Guestrooms: 3F~9F 222

Official homepage

<https://www.keihanhotels-resorts.co.jp/the-thousand-kyoto/>

◆ Drawings/imagery are for illustrative purposes only.

<Enquiries about this release / coverage>

Keihan Hotels & Resorts Co., Ltd.

The Thousand Kyoto Heads of PR:

KANAKO KAYA kaya-k@keihanhotels-resorts.co.jp

MIKU MORI mori-m@keihanhotels-resorts.co.jp

Tel.: +81-75-351-0186 Fax: +81-75-343-3722

